

BRIXTON GRANDE

3,353 – 3,398 A/C Sq. Ft.
4 – 5 Bedrooms | 4 – 4.5 Baths



FL Med Alabaster
Elevation FM3



Coastal Extra White
Elevation FM3 with Stone



Bold Front Porch
Elevation CO3



Coastal Lullaby
Elevation CO3 with Stone



Coastal Toque White
Elevation CA3O1



*Elevation FM1 shown. Room dimensions, square footage and window sizes and locations may vary based on elevation selection.

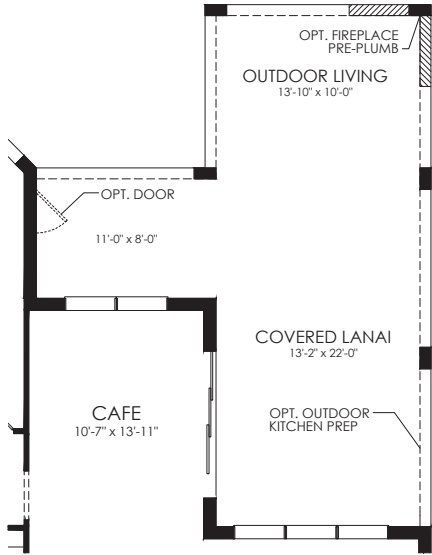
Artist's renderings are conceptual only and are not intended to be an exact representation or show specific detailing. Square footage, room dimensions and spatial arrangements on this plan are approximate and may vary in final construction and may vary by elevation. See a sales representative for details.
©2025 Pulte Home Company, LLC. CBC057850 CAY 3-27-25



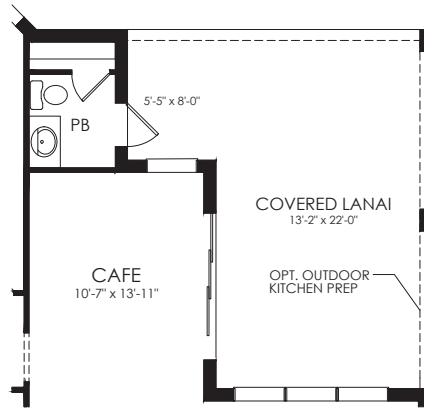
STRUCTURAL OPTIONS

BRIXTON GRANDE

Personalize your home design.
 Visit Pulte.com/Caymas to access our
 interactive floor plan tool.

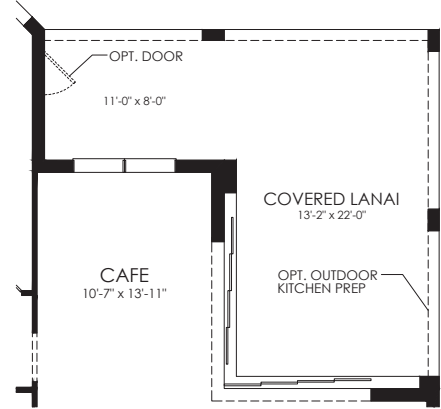


Outdoor Living

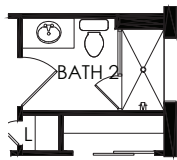


Pool Bath

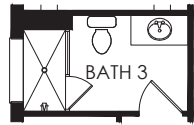
Adds 45 SF



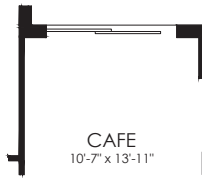
Zero Corner SGD @
Gathering Room



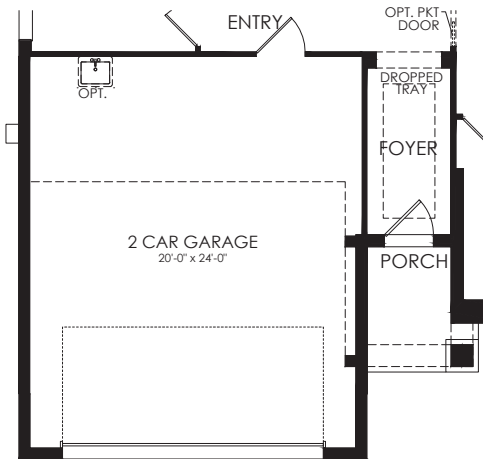
Shower @ Bath 2



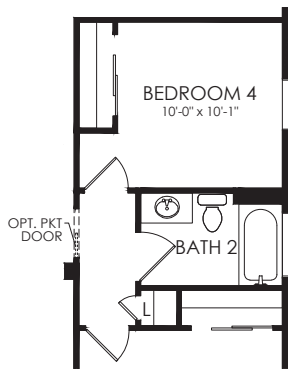
Shower @ Bath 3



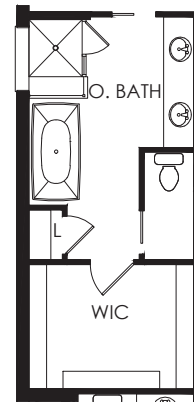
SGD ILO Window
@ Cafe



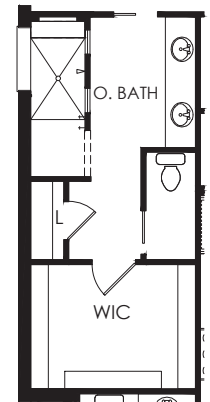
4' Garage Extension



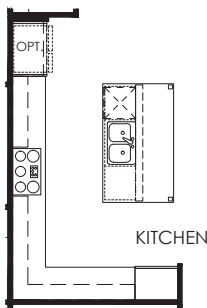
Bedroom 4 Ilo Flex



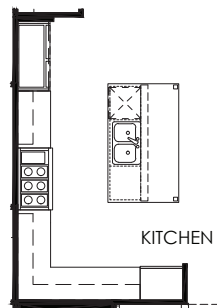
Owner's Bath
Layout 3



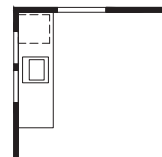
Owner's Bath
Layout 6



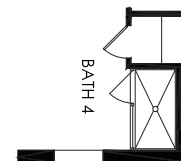
Kitchen Layout 5



Kitchen Layout 8



Wet Bar Opt.



Shower @
Bath 4